

WHAT IS A RAPID RESPONSE TEAM?

A Rapid Response Team (RRT) provides prompt support in the event a child is at risk of suspension or expulsion.

It is a short-term, action focused support, designed to connect families and providers with existing tools & resources. Support is customized to fit a child's or teacher's needs.



The Rapid Response Team's main goal is to ensure every early childhood professional increases their confidence, classroom practices, and has access to resources to provide children with a positive early childhood experience.

RRT will be involved by referral if a child is on the verge of suspension or expulsion from their childcare provider.

SUPPORTING FAMILIES



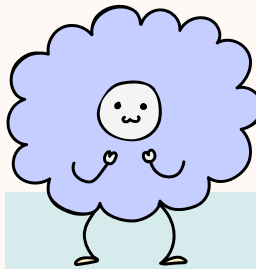
Supports for Pennsylvania families of children, birth to age five and childcare providers. ★

- Has your child been suspended or expelled from a childcare program?
- Has your child been asked to leave or told they are "not a good fit" for a child care program?
- Are you having trouble accessing resources for yourself and/or your children?
- Do you need support obtaining an Early Intervention evaluation for your child?

WHAT A RRT CAN DO

Observe the child at the childcare facility (with family and provider permission).

Gather important information about the child from family and provider.



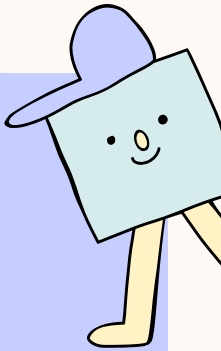
Provide referrals to other community services as needed.



Provide follow-up coaching to classroom staff.

Offer strategies for early childhood staff and families.

Convene a multi-disciplinary team (including the family).



SUPPORTING CHILDCARE PROVIDERS

- Do you have concerns about a child enrolled in your program?
- Are you considering expelling or suspending a child?
- Does your staff need help managing child(ren)s behaviors they find challenging?
- Do you need connected to professional development to support your staff in using positive guidance for child behaviors, improving teacher-child relationships, or expanding classroom management skills?



RRT is one of many different supports available to childcare programs in Pennsylvania. If you are unsure what support may best fit your program needs, reach out to your ELRC for guidance.



Pennsylvania
Office of Child Development
and Early Learning



The Rapid Response Team can help! Childcare providers and families/caregivers can submit a request for support.

You are not alone. Contact the Rapid Response Team to assist with behaviors your staff find challenging to prevent a child's expulsion/suspension.

CONTACT US!

Visit the ELRC Region 1 website
[nwirelrc.org/rapid-response-team/](https://www.nwirelrc.org/rapid-response-team/)



Email us at rrt@nwirelrc.org
Ann Schaack
Katie Allen
Lorraine Rodriguez

This project was made possible by grant number 90TP0096. Its contents are solely the responsibility of the authors and do not necessarily represent the official view of the United States Department of Health and Human Services, Administration for Children and Families.

What you need to know

RAPID RESPONSE TEAM

Helping families and childcare providers