

# RAPID RESPONSE TEAM

## Helping families and childcare providers

A Rapid Response Team (RRT) provides prompt support in the event a child is at risk of suspension or expulsion.

It is a short-term, action focused support, designed to connect families and providers with existing tools & resources. Support is customized to fit a child's or teacher's needs.

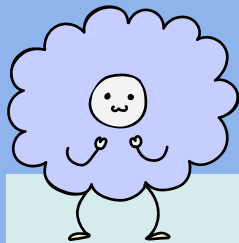
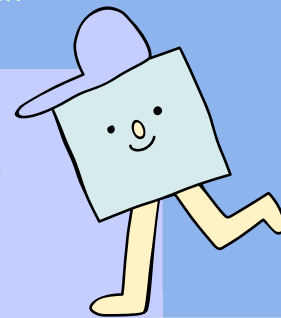
The Rapid Response Team's main goal is to ensure every early childhood professional increases their confidence, classroom practices, and has access to resources to provide children with a positive early childhood experience.

RRT will be involved by referral if a child is on the verge of suspension or expulsion from their childcare provider.

### WHAT A RRT CAN DO

Observe the child at the childcare facility (with family and provider permission).

Gather important information about the child from family and provider.



Provide referrals to other community services as needed.



Convene a multi-disciplinary team (including the family).

Supports for Pennsylvania families of children, birth to age five and childcare providers.



**You are not alone.**  
Contact the Rapid Response Team to assist with behaviors your staff find challenging to prevent a child's expulsion/suspension.

Provide follow-up coaching to classroom staff.

Offer strategies for early childhood staff and families.



The Rapid Response Team can help!  
Child care providers and families/caregivers can submit a request for support.

RRT is one of many different supports available to childcare programs in Pennsylvania. If you are unsure what support may best fit your program needs, reach out to your ELRC for guidance.

### CONTACT US!

Visit the ELRC Region 1 website

[www.nwirelrc.org/rapid-response-team](http://www.nwirelrc.org/rapid-response-team)

Email us at [rtr@nwirelrc.org](mailto:rtr@nwirelrc.org)

Ann Schaack

Katie Allen

Lorraine Rodriguez



Pennsylvania  
**Office of Child Development  
and Early Learning**